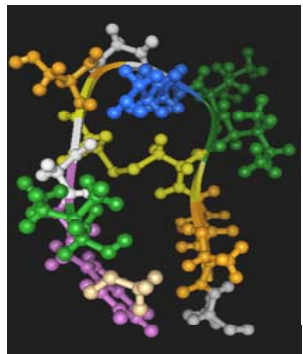
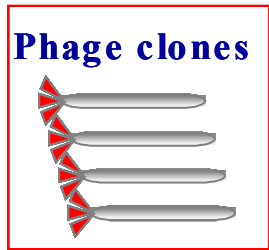


# Selection of mimetic peptides of HIV-1 gp41 immunodominant epitope

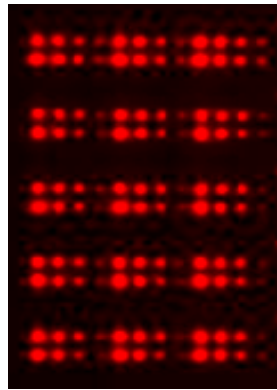


Ace-IWGCSGKLICTTA

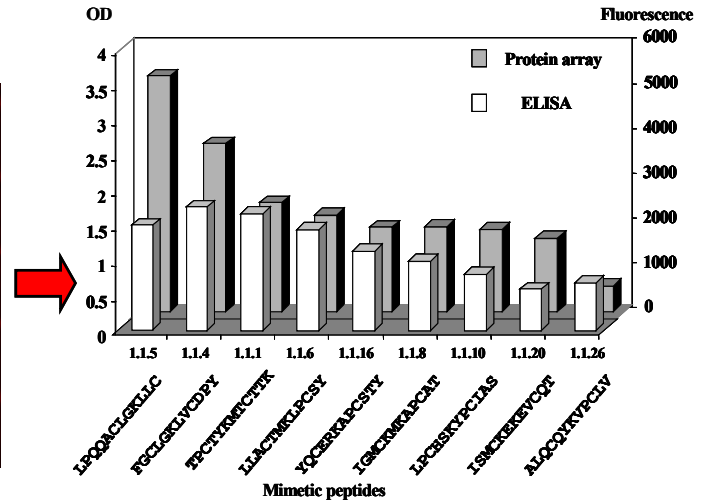
Immunodominant epitope



Biopanning phage display with IgG of AIDS patients



Binding assessment with phage display array



Binding affinity for IgG in sera of AIDS patients

Arnaud et al., 2004, Proteomics